



Padova, 31th January 2024

2nd year MEDfOR in Padova

Paola Gatto, Davide Pettenella, Mauro Masiero, Laura Secco,
Mara Thiene, Riccardo Da Re, Susanne Kloehn
TESAF Dept. – University of Padova

TESAF Dipartimento Territorio
e Sistemi Agro-Forestali



1

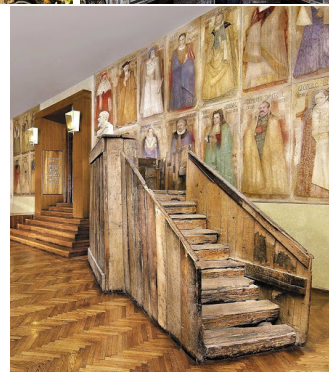
Padova and its University



1222-2022
800
ANNI



UNIVERSITÀ
DEGLI STUDI
DI PADOVA



TESAF Dipartimento Territorio
e Sistemi Agro-Forestali



2

University of Padova – facts and figures

Over 70,000 Students
Over 7,000 International students

Over 3,000 Academic Staff
Over 2,300 Technical & Admin Staff

32 Departments
8 Schools

1 University Hospital
1 Veterinary Hospital
29 University Libraries
13 University Museums
1 School of Higher Education
10 Halls of Residence
17 University Canteens



University of Padova – Ranking (2023)

- ✓ QS Ranking by subject:
76th in the world for Forestry and Agricultural Sciences
- ✓ Shanghai Ranking Consultancy:
44th in the world for Agricultural Sciences
- ✓ QS Sustainability Ranking :
1st in Italy and **61st** in the world
- ✓ Best Global Universities
1st in Italy and **115th** in the world
- ✓ NTU
2nd in Italy and **82nd** in the world

Agripolis Campus, Legnaro (Padova)



TESAF Dipartimento Territorio
e Sistemi Agro-Forestali



UNIVERSITÀ
DEGLI STUDI
DI PADOVA

5

Studying Forest Science in Padova: Master courses in English

MSc Forest Sciences

Specialisation Track
**Forest and Land
Management**

Specialisation Track
**Forests and
Nature for the
Future**

2nd year MEDfOR students

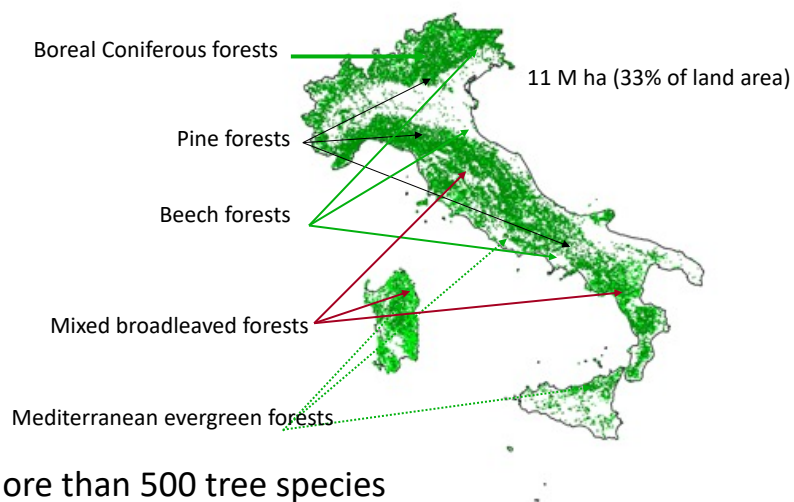
TESAF Dipartimento Territorio
e Sistemi Agro-Forestali



UNIVERSITÀ
DEGLI STUDI
DI PADOVA

6

Italy - a forest-rich and biodiverse country



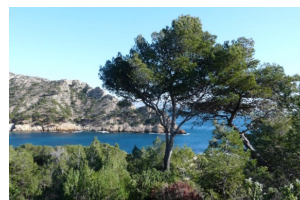
TESAF Dipartimento Territorio
e Sistemi Agro-Forestali

UNIVERSITÀ
DELLE SCIENZE
DI PADOVA

7

Social and Environmental Responsibility in Mediterranean Forestry

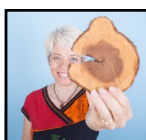
Governance, policies and tools for
Mediterranean forests in the context of global
and local change - deforestation, land use
change, biodiversity loss



8

Courses for II year Medfor Students

Courses	n. of ECTS
Forest policy, governance & conflicts: from global to local	8
Environmental resource valuation	6
Market-based instruments for Ecosystem Services	6
Social responsibility and certification	8
Research planning	3
Directed Studies + Thesis	4 + 26



Laura Secco

Forest policy, governance & conflicts: from global to local

- Understanding **connections** among **forest policy, forest governance and conflict management** options at different scales
- Basic knowledge and skills on tools for **policy and governance analysis**
- Techniques for **conflict analysis and management**, including **participatory approaches** to decision making
- **Case studies** in tropical, temperate and Mediterranean forests



Mara Thiene

Environmental resource valuation

- Theory and practice of **non-market valuation**
- Focus on **statistical methods** for **environmental data analysis**
- Practice with **econometric tools** and **software packages** for environmental data analysis, model estimation, data visualization and mapping of results (NLogit, InVEST)

TESAF Dipartimento Territorio e Sistemi Agro-Forestali

UNIVERSITÀ DEGLI STUDI DI PADOVA

11

Paola Gatto

Market-based instruments for Ecosystem Services

- Familiarizing with the **broad spectrum of market-based instruments** for the provision of ecosystem services
- Focus on **Payments for Ecosystem Services (PES)** structure, design and assessment
- Examples, assessment of **case-studies**

TESAF Dipartimento Territorio e Sistemi Agro-Forestali

UNIVERSITÀ DEGLI STUDI DI PADOVA

12



Social responsibility and certification

Davide Pettenella and Mauro Masiero

- Driving forces behind **CSR policies** (their rationale, origins and evolution over time) → special focus on the forest sector.
- Broad range of tools to support CSR: **private, public and partnership** tools
- Focus on **forest certification**
- Theoretical framework, **examples and case-studies**






Dipartimento Territorio e Sistemi Agro-Forestali



UNIVERSITÀ DEGLI STUDI DI PADOVA


13




Research planning


Riccardo Da Re

- **Statistical tools, approaches and methodologies** that might be used when performing **research in forestry**
- Sketch out a **survey design**, from the problem definition and the conception to the results analysis, both qualitative and quantitative
- Question wording, sampling design, interview techniques, group interviews, stakeholder analysis...
- Work on **concrete case studies**





Dipartimento Territorio e Sistemi Agro-Forestali



UNIVERSITÀ DEGLI STUDI DI PADOVA

14

Synergies and networks

- **FAO** (Rome – Italy)
- **CIFOR** *Center for International Forestry Research*
- **EFI** and **EFIMED**
- **USSE** - *Unión de silvicultores del Sur de Europa*
- **Biodiversity International** (former IPGRI - Rome)
- **Forest Stewardship Council (FSC) Int. Centre** (Bonn) and FSC-Italy (Padova)
- **UN-ECE Timber Committee**
- **WWF Mediterranean Program** (Rome)
- Forest consultant companies (ETIFOR,...) and **NGOs**



Academic calendar

- Start of first semester: first week of October 2024
- End of first semester: half January 2025
- Winter exam session: half January – Feb 2025
- (second semester)
- Summer exam session: late June – July 2025

Some courses have interims

... and after the Master?

The screenshot displays the TESAF website for the University of Padua. The header includes the university logo, navigation links (Unipd.it, Departments, Libraries, Contacts, IT, EN, Webmail, Uniwed), and a search bar. The main navigation menu features DEPARTMENT, COURSES, RESEARCH (highlighted), SERVICES, DISCOVERING PADOVA, and INTERNATIONAL AREA. The breadcrumb trail reads 'Home > Research > PhD LERH Program'. The central banner for the LERH (Land Environment Resources and Health) PhD Program features a row of trees. A sidebar on the left lists program details like 'About the PhD Program', 'Governance', and 'How to apply'. The main content area lists 'Doctoral Degrees - PhD LERH Program' with links to 'About LERH', 'Governance', 'Teachers and students', 'Priority research topics', 'How to apply', 'Teaching', 'Documents', and 'Links'. The URL www.tesaf.unipd.it is prominently displayed in blue.

24

Final wish to all those coming to Padova

“REDIBO PLENIOR”

“I shall come back filled with knowledge, more mature”
 motto by G.V. Pinelli, second half of XVI Century



25